

Project :

File : C:_AKCE\456201~1\WPOET~2.LPF

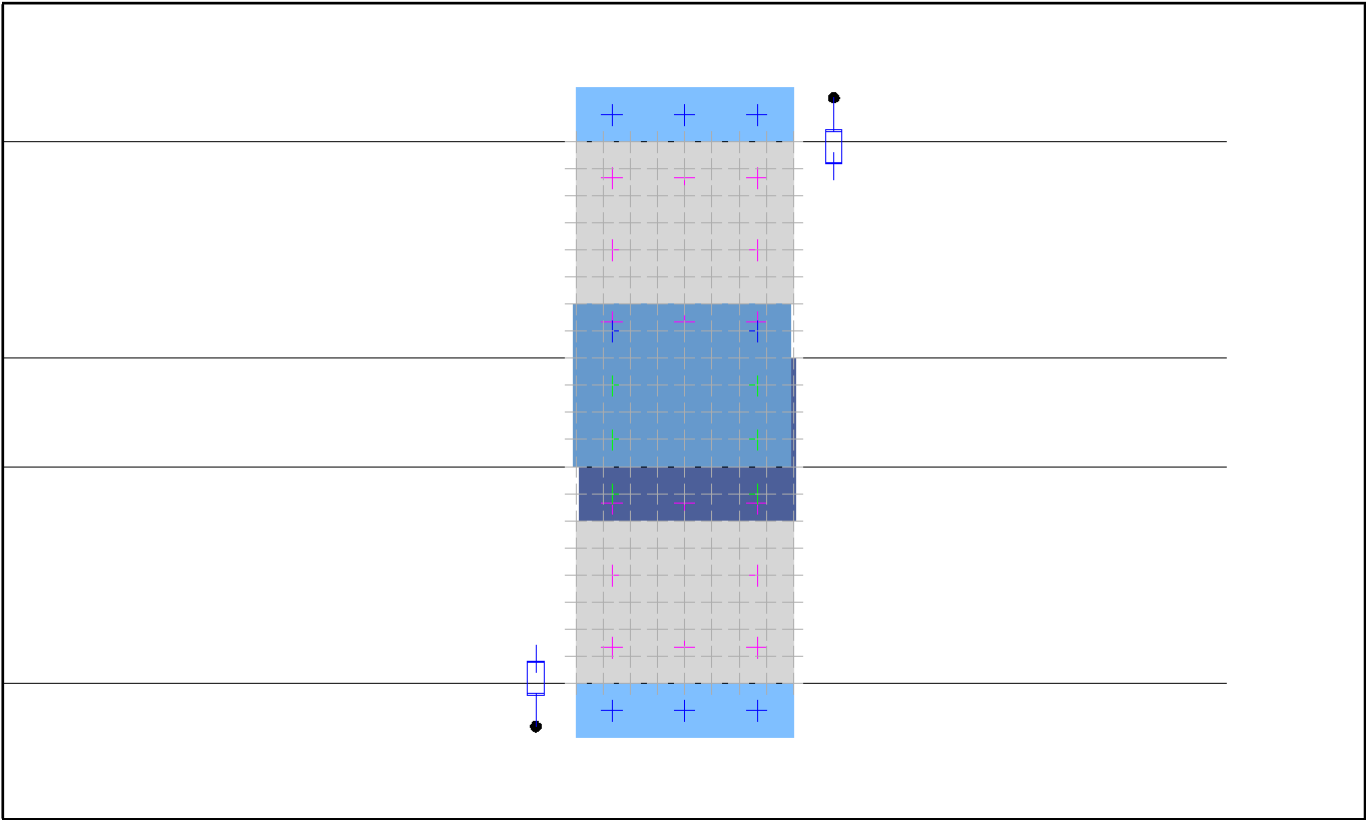
Summary

Grid summary

Average type : Arithmetic (A) or Weighted (W)

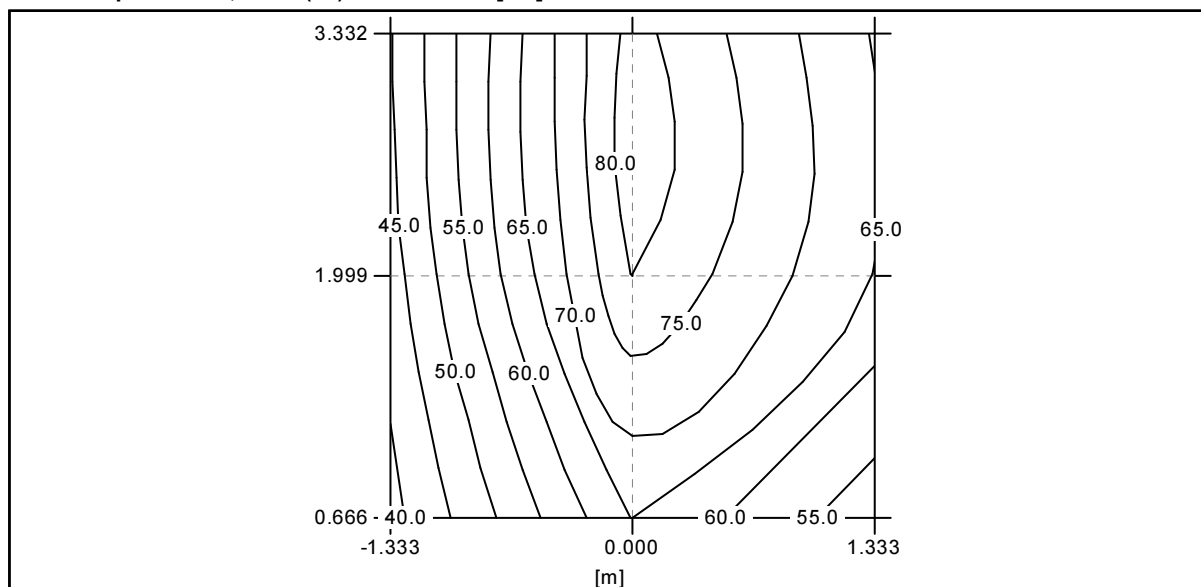
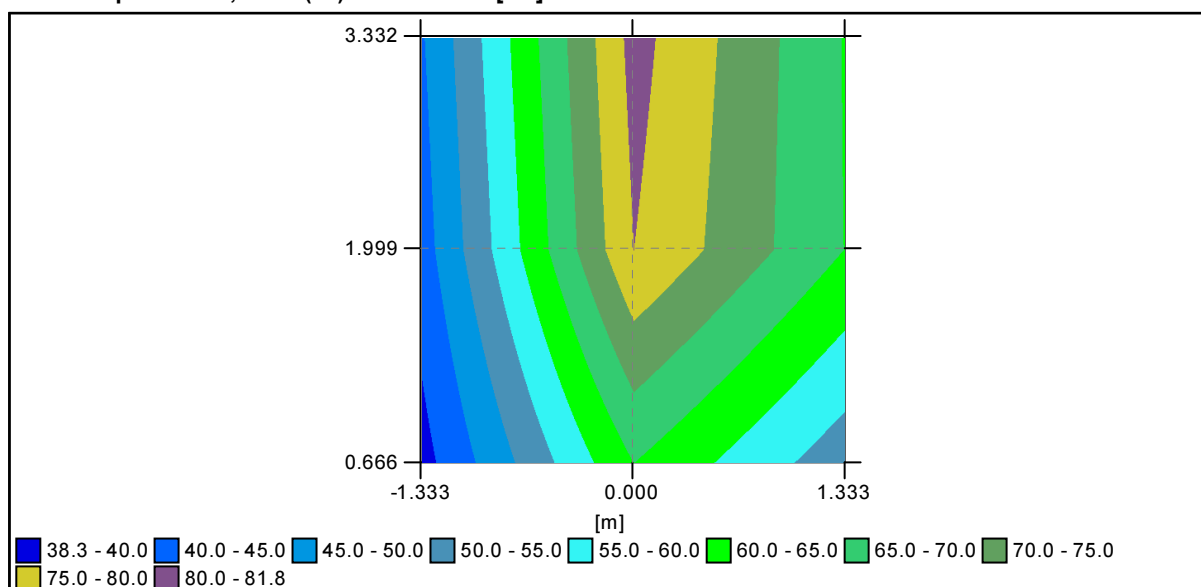
Zakladni prostor A1, zleva (22)	Min	Max	Ave (A)	Min/Max	Min/Ave
Illuminance (lux)	38,3	81,8	59,3	46,8	64,5
Zakladni prostor A2, zprava (23)	Min	Max	Ave (A)	Min/Max	Min/Ave
Illuminance (lux)	38,3	81,8	59,3	46,8	64,5
Doplňkový prostor B1, zleva (24)	Min	Max	Ave (A)	Min/Max	Min/Ave
Illuminance (lux)	31,4	48,6	40,1	64,6	78,3
Doplňkový prostor B2, zprava (25)	Min	Max	Ave (A)	Min/Max	Min/Ave
Illuminance (lux)	31,4	48,6	40,1	64,6	78,3
Doplňkový prodloužený prostor B1', zleva (26)	Min	Max	Ave (A)	Min/Max	Min/Ave
Illuminance (lux)	46,8	114,6	75,2	40,8	62,2
Doplňkový prodloužený prostor B2', zprava (27)	Min	Max	Ave (A)	Min/Max	Min/Ave
Illuminance (lux)	46,8	114,6	75,2	40,8	62,2
Horizontální osvětlenost (28)	Min	Max	Ave (A)	Min/Max	Min/Ave
Illuminance (lux)	77,8	279,1	192,5	27,9	40,4

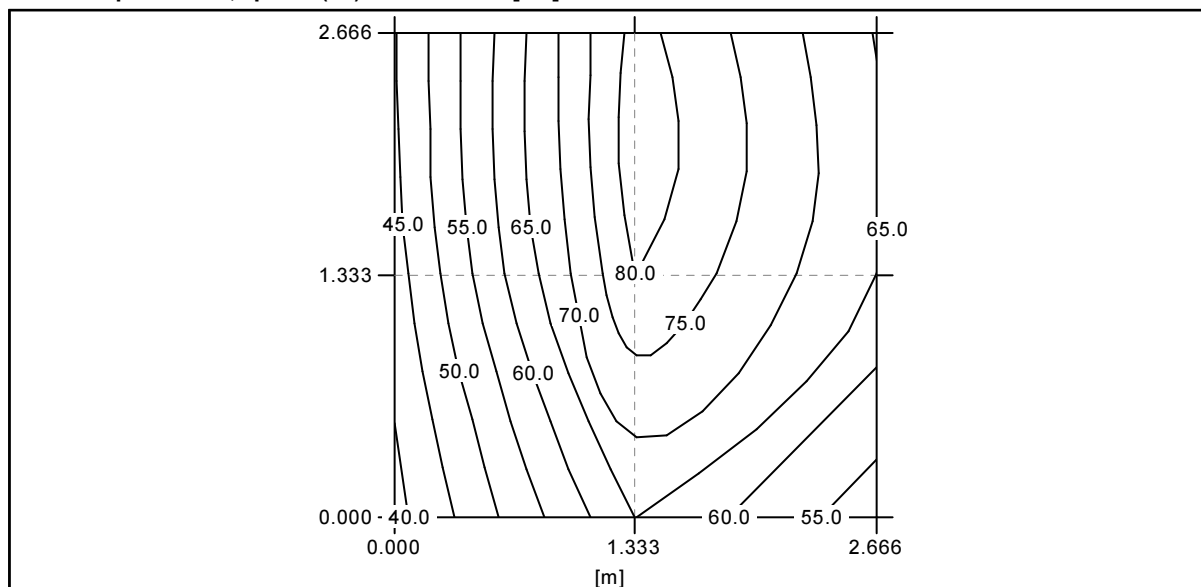
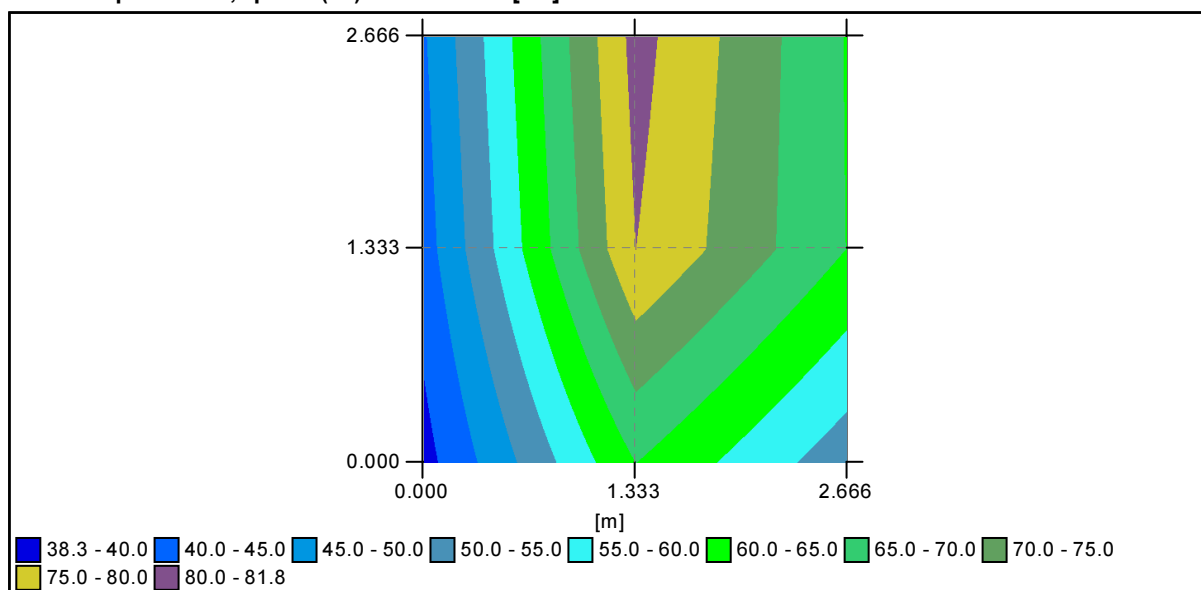
Current view Configuration (1)

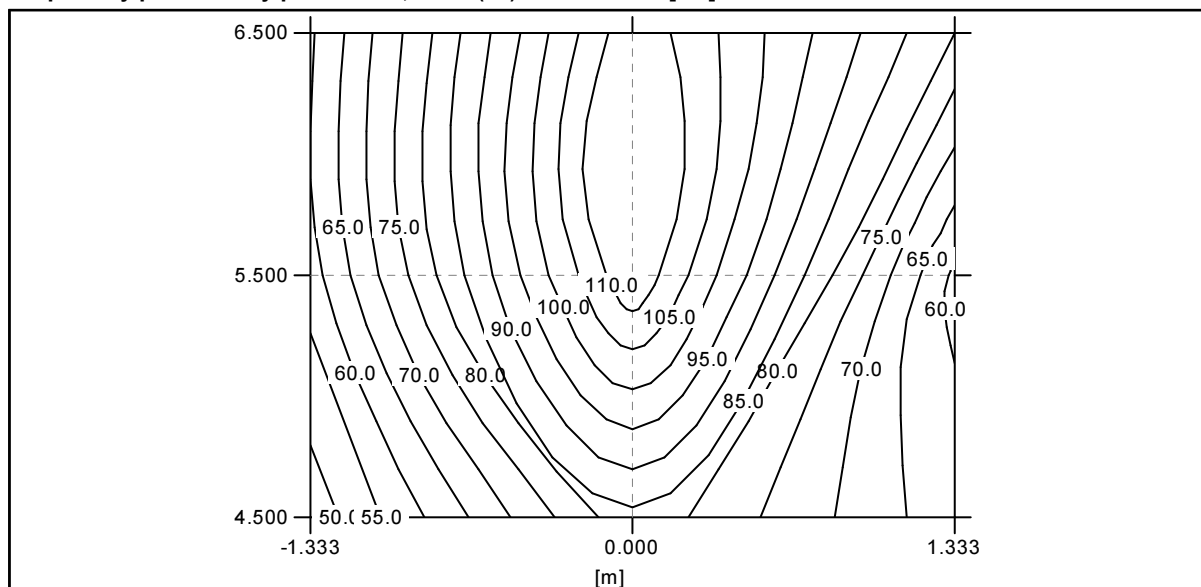
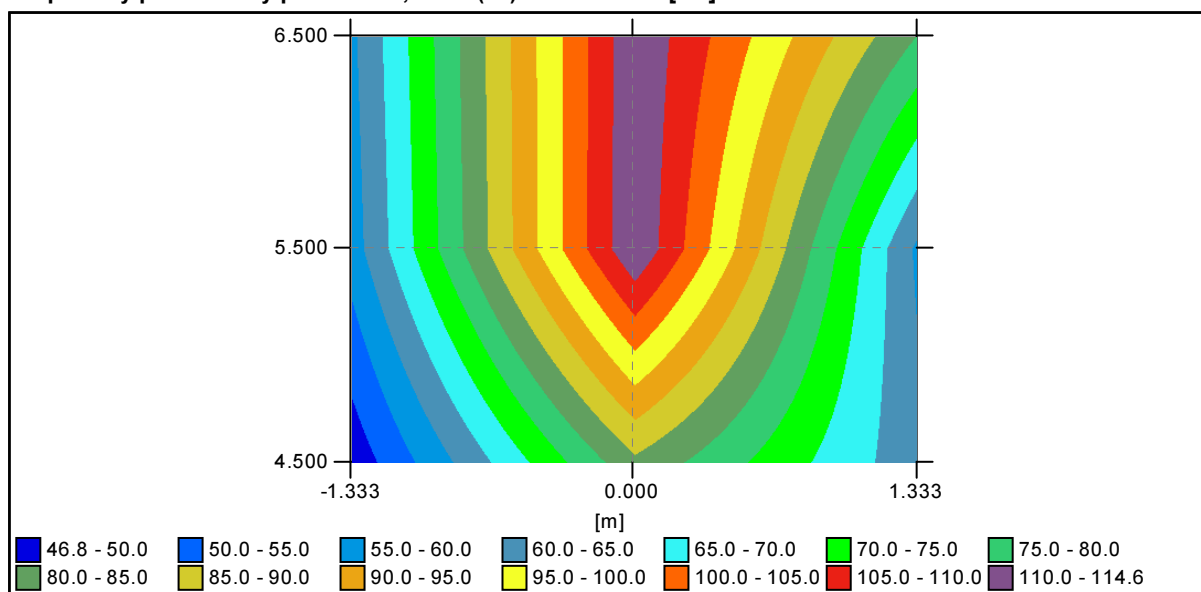


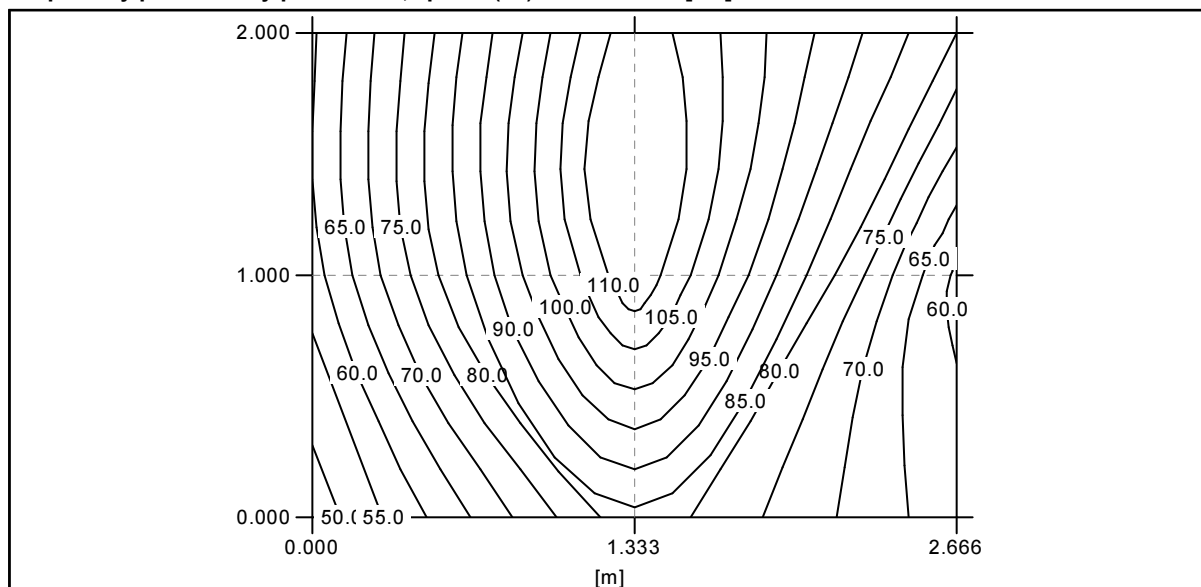
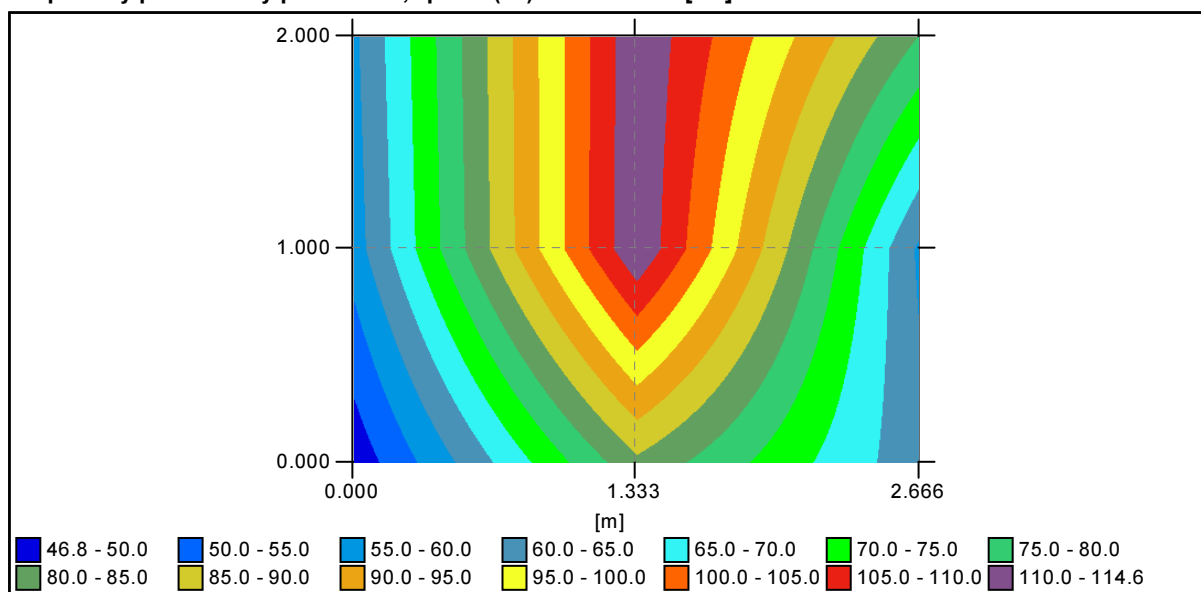
Grid results

Average type : Arithmetic (A) or Weighted (W)

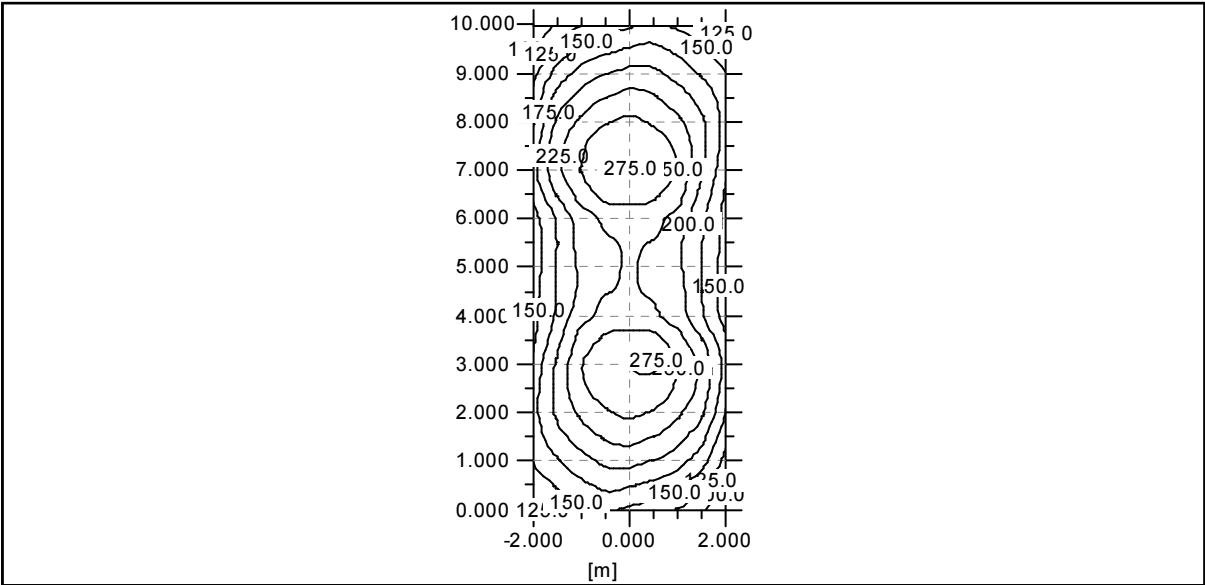
Zakladni prostor A1, zleva (22) : Illuminance [lux]**Zakladni prostor A1, zleva (22) : Illuminance [lux]**

Zakladni prostor A2, zprava (23) : Illuminance [lux]**Zakladni prostor A2, zprava (23) : Illuminance [lux]**

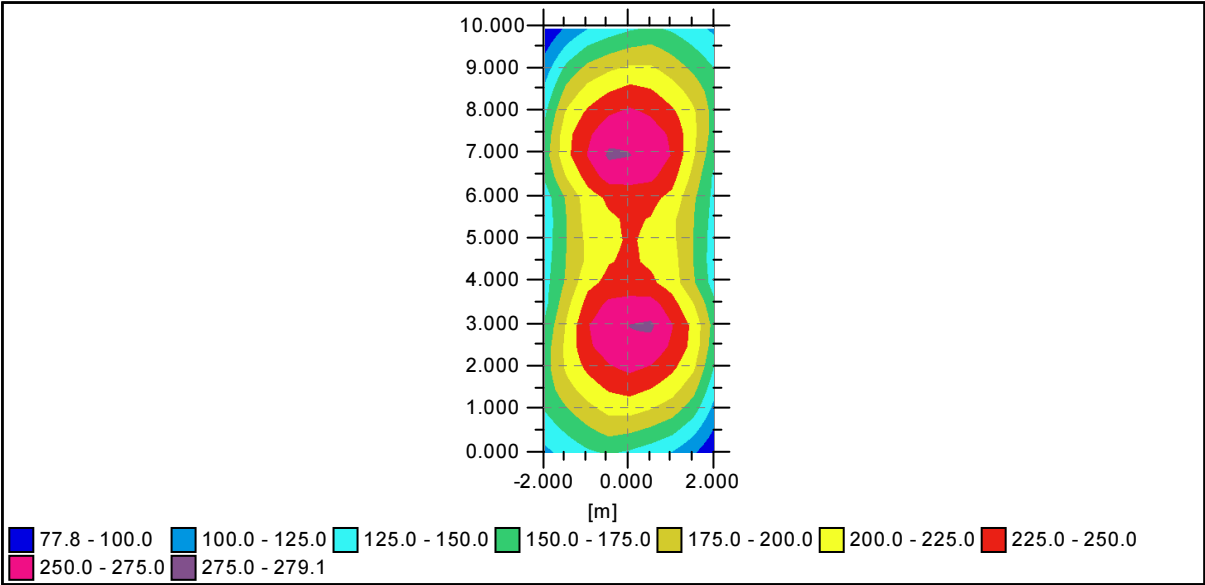
Doplňkový prodloužený prostor B1', zleva (26) : Illuminance [lux]**Doplňkový prodloužený prostor B1', zleva (26) : Illuminance [lux]**

Doplnkovy prodlouzeny prostor B2', zprava (27) : Illuminance [lux]**Doplnkovy prodlouzeny prostor B2', zprava (27) : Illuminance [lux]**

Horisontani osvetlenost (28) : Illuminance [lux]



Horisontani osvetlenost (28) : Illuminance [lux]



General information

Configuration details

• Configuration (1)

Activated ☒

Matrix	Description	Flux	MF	Luminaire
348062	C:\Matrices\348062.mat	17,8	0,80	No Picture

Group details

Single								
	N°	Start			Luminaire			
		X	Y	H	Matrix	Az	Inc	Rot
✓	1	-2,750	0,200	6,000	348062	0,0	5,0	0,0
✓	2	2,750	9,800	6,000	348062	180,0	5,0	0,0